

## The Royal Descents of Rev. Joseph Wayne Haskell

by Richard E. Haskell and Elizabeth (Haskell) Fisk  
[rehask@comcast.net](mailto:rehask@comcast.net), [eafisk@earthlink.net](mailto:eafisk@earthlink.net)

Are Haskells in America descended from royalty? A fascinating part of genealogy is to see if one is descended from royalty. The old adage goes that “everyone is descended from Charlemagne, the trick is to prove it.” A little thought and math will show that this is not farfetched. We are all familiar with the idea that all of us biological Haskells in America are descended from the same William Haskell that was the father of the three brothers William, Roger, and Mark that came to America in the 1600s. But the opposite is also true. Thus each of us has two parents, four grandparents, eight great-grandparents, and so-forth back each generation. Note that the number of great--grandparents doubles each generation.

For example, our father, Joseph Wayne Haskell<sup>9</sup> (Joseph Thissell<sup>8</sup>, Joseph Thissell<sup>7</sup>, Samuel<sup>6</sup>, Nathaniel<sup>5</sup>, Benjamin<sup>4</sup>, Robert<sup>3</sup>, William<sup>2</sup>, Mark<sup>1</sup>) has eight generations of ancestors going back to the brother, Mark<sup>1</sup>, who was born in 1621. This means that our father has  $2^8 = 256$  great6-grandparents (6 greats) in Mark’s generation alone. The next generation will add another 512 great7-grandparents! It would take 24 generations to get back to King John “Lackland” of England who was born in 1166. In that generation our father would have  $2^{24} = 16,777,216$  great22-grandparents in that generation alone (and an equal number over all previous generations). How can this be when the population of England in 1215 was somewhere between 3.5 and 5 million?<sup>a</sup>

The answer, of course, is that all great $n$ -grandparents ( $n$  greats) along the way are not all different – lots of cousins had to marry. At any generation how likely is it that some of the great $n$ -grandparents will be the same people? In the case of our father we have identified 115 different ancestors in the 8<sup>th</sup> generation of Mark<sup>1</sup>, out of which 23 are common ancestors from generations 7 and 8. We are missing 118 great6-grandparents in this generation. (Note that  $115 + 23 + 118 = 256$ , the total number of possible great6-grandparents.) Thus, we estimate that about  $23/115 = 0.2$ , or 20% of the great6-grandparents in generation 8 are common ancestors. This means that we would expect to have  $0.8 \times 256 = 204$  different ancestors going back to generation 9. If the same model were to apply to each of these 204 individuals for the next 8 generations, then our father would have  $204 \times 204 = 21,616$  great14-grandparents at generation 16, and  $204 \times 204 \times 204 = 8,489,664$  great22-grandparents in 1215, which is still larger than the population of England. Suppose that instead of 20% of the ancestors in generation 8 being the same, we double it to 40%. Then 60% of 256 (154) will go on to generation 9 and this would reduce the number of great22-grandparents in 1215 to  $154 \times 154 \times 154 = 3,652,264$  which is still about the entire population of England! Thus, it is quite likely that all Haskells are descended from royalty, including King John. How can you identify your royal descent?

Gary Boyd Roberts, in his latest edition of *The Royal Descents of 600 Immigrants of the American Colonies or the United States*, identifies the royal descents of 600

---

<sup>a</sup> D. Danziger and J. Gillingham, 1215 – *The Year of Magna Carta*, Simon & Schuster, New York, 2003, pg. 24.

immigrants who were themselves notable or left descendants notable in American history.<sup>b</sup> The one that is probably the easiest to identify as your ancestor, is **John Thorndike** (b. 23 Jul 1603) who married **Elizabeth Stratton** (b.1614/1621). Roberts documents how Elizabeth Stratton is descended from **John “Lackland,” King of England**, d. 1216, **William I the Lion, King of Scotland**, d. 1214, and **Henry I, King of France**, d. 1060.

John Thorndike was one of the first nine settlers of what is now Ipswich, MA. He married Elizabeth Stratton before 25 December 1637, and was buried on 3 November 1668 in Westminster Abbey, London. The book, *A Thorndike Family History*, documents 12 generations of descendants of John Thorndike and Elizabeth Stratton.<sup>c</sup> If you have a Thorndike as an ancestor, you are most likely descended from John Thorndike and Elizabeth Stratton and therefore the above three royal descents. Within the first four generations (mid-to-late 1700s), Thorndike daughters married men with surnames that include PROCTOR, HALE, MORGAN, GOULD, PRIDE, THISSELL, LOVETT, OBER, FOSTER, REDDING, WOODBERRY, CORNING, CATE, DYER, ALDEN, WALLIS, HUNT, REA, HILTON, WIGGEN, BAKER, KITTREDGE, MOORS, MARSTON, STANDLEY, SEWALL, STEWART, CONANT, DODGE, GROVES, SMITH, LEE, ALLEN, LANGDELL, and OLIVER. Many Haskells whose ancestors stayed in Essex County, Massachusetts until the mid-1700s would most likely have several of these names as ancestors, and therefore are likely to be able to find a link to John Thorndike and Elizabeth Stratton.

Our father, Joseph Wayne Haskell (see Fig. 1), was born in Wenham, MA on 26 Feb 1902 and grew up in Beverly. His grandfather, Joseph Thissell Haskell, Sr. (b. 15 Sep 1816), was a sea captain whose ship, the Barque Montpelier of Gloucester, was painted by Pellegrini in the Bay of Marseilles in 1857 (see Fig. 2)<sup>d</sup>. While Joseph Thissell, Sr. is a direct descendant from the brother Mark<sup>1</sup>, his



Fig. 1 Joseph Wayne Haskell



Fig.2 “Barque Montpelier of Gloucester  
J. T. Haskell in the Bay of Marseilles 1857”

<sup>b</sup> Gary Boyd Roberts, *The Royal Descents of 600 Immigrants to the American Colonies or the United States*, Genealogical Publishing Co., Inc., Baltimore, 2004.

<sup>c</sup> *A Thorndike Family History – Descendants of John and Elizabeth (Stratton) Thorndike*, Newbury Street Press, Boston, MA 2000.

maternal grandmother, Lucy Lovett, is descended from the brother William<sup>1</sup> Haskell.<sup>e</sup> Joseph Thissell's daughter, Elizabeth, was 5 years old at the time and she and her mother (and our great-grandmother), Nancy Adams Lamson, accompanied Joseph Thissell on this trip to France. Elizabeth and her father can be seen on the ship in the painting in Fig. 2. When they returned from this trip, Nancy was pregnant with our grandfather, Joseph Thissell Haskell Jr., who was born on 24 Dec 1857. Our great-grandfather, Joseph Thissell Haskell, Sr. then returned to sea where he was lost on 22 Oct 1858. The 5-year-old Elizabeth Haskell (Aunt Lizzy) bought the doll shown in Fig. 3 in France while on this trip.<sup>f</sup> She lived to be 94 years old in a small house on the corner of Lovett and Thorndike Street in Beverly. (The house has since been torn down and rebuilt, but the old brick wall is still there – see Fig. 4). Our father, Joseph Wayne Haskell, lived in a small house (also replaced) on Lovett street directly behind Aunt Lizzy's house.



Fig. 3 Doll bought in France in 1857 for Aunt Lizzy, the daughter of Joseph Thissell Haskell



Fig. 4 Site of Aunt Lizzy's house on the corner of Lovett and Thorndike streets in Beverly, MA

Our father's mother was Lydia Danforth Gallop, who was born in Beverly, MA on 9 Jan 1861 (see Fig. 5). J. Wayne, as he was called, graduated from Beverly high school in 1919 where he was salutatorian and editor of the student yearbook (see Fig 6).<sup>g</sup> He graduated with a BA from Boston University in 1923,<sup>h</sup> an AM from the Boston University Liberal Arts Graduate School and cum laude with a STB from the BU Theological Seminary in 1936.<sup>i</sup> He was ordained in the First Community Church of Danvers on 15 Mar 1934.<sup>j</sup> He married Dorothy Frances Tower in Boston on 6 July 1935.<sup>k</sup> They had three children while living in Concord, NH where he was minister of

<sup>d</sup> Ship painting owned by Richard E. Haskell.

<sup>e</sup> Lucy<sup>6</sup> Lovett (Capt. Josiah<sup>5</sup> Lovett, Rebecca<sup>4</sup> Woodbury, Mary<sup>3</sup> Dodge, Mary<sup>2</sup> Haskell, William<sup>1</sup> Haskell)

<sup>f</sup> doll owned by Elizabeth Haskell Fisk

<sup>g</sup> *The Aegis. Beverly High School, June, 1919.* Pgs.163, 172, 174, 175; Yearbook and original photo owned by Elizabeth Haskell Fisk.

<sup>h</sup> Program: *Commencement Week of Nineteen Twenty-Three of Boston University*, class prophet, J. Wayne Haskell. Owned by E. H. Fisk.

<sup>i</sup> Newspaper picture: *Boston Traveler*, Boston, MA, Monday, June 15, 1936. "View of Boston University Commencement" owned by E.H.Fisk.

<sup>j</sup> Program: "Ordination of Joseph Wayne Haskell to the Christian Ministry". First Community Church, Danvers, Massachusetts. 1934. Owned by E.H. Fisk.

<sup>k</sup> Register of Marriages, Melrose, Middlesex Co., MA. Vol. 5, p. 374, No. 9250

the White Memorial Universalist Church (1937-1946). He became minister of the First Congregational Church in Milford, NH in 1946 and remained there until his death in 1951. In addition to being a minister, J. Wayne Haskell was a professional magician who performed magic shows throughout New England. He was a lifelong member of the Society of American Magicians and the chaplain of the International Brotherhood of Magicians.

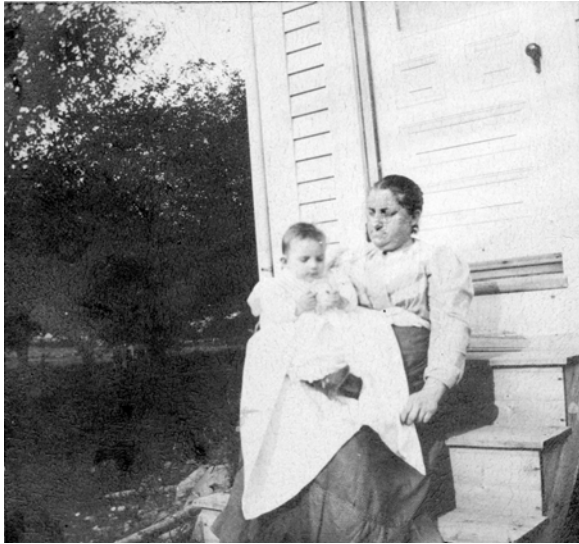


Fig. 5 Joseph Wayne Haskell and his mother Lydia Danforth Gallop



Fig. 6 High school graduation picture of Joseph Wayne Haskell

J. Wayne Haskell's maternal grandfather was Edmund Kimball Gallop (b. 5 Oct 1814) whose mother was Nabby Baker Lovett (b. 17 Jul 1786)<sup>1</sup>. Nabby's parents were Jonathan Lovett (b. 29 May 1758) and Elizabeth Ober (b. 1 Aug 1755), and her grandparents were John Lovett (b. 2 Mar 1734) and Judith Ober (b. 27 Nov 1738). Nabby had a sister, Betsey (b. 29 Feb 1784), who died of smallpox on 9 Dec 1792. John Lovett's headstone that refers to Betsey is shown in Fig. 7. John Lovett's father was Ebenezer Lovett (b. 9 Feb 1702) who was married to Joanna



Fig. 7 Headstone inscription:  
(Central Cemetary, Beverly, Essex Co., MA)

In Memory of  
Mr. John Lovett,  
Who died Dec 13<sup>th</sup>  
1792, In the 58<sup>th</sup> year  
of his age  
Also Betsey his grand daug.  
Who died of the Small pox  
9<sup>th</sup> infant aed 10 vears

Thorndike (Capt. John<sup>3</sup> Thorndike, Capt. Paul<sup>2</sup> Thorndike, John<sup>1</sup> Thorndike). The complete descent of Joseph Wayne Haskell from John Thorndike and Elizabeth Stratton is shown in Table 1.

**Table 1 Descent of Joseph Wayne Haskell from John Thorndike and Elizabeth Stratton**

1.	<b>John Thorndike</b> (b. 23 Jul 1603) = <b>Elizabeth Stratton</b> (b.1614/1621) <sup>m</sup>
2.	Paul Thorndike (b. 1643, Ipswich, Essex, MA, d. Bef 2 Jan 1698, Beverly, MA) <sup>m</sup> = Mary Patch (b. 6 Apr 1650, Ipswich, Essex, MA, 12 May 1716, Beverly, MA) <sup>m</sup>
3.	Capt. John Thorndike (b. 22 Jan 1674, Beverly, Essex, MA, d. 23 Mar 1759/1760, Beverly, MA) <sup>m</sup> = Joanna Larkin (b. 13 May 1673, Charlestown, MA, d. 12 May 1716, Beverly, MA) <sup>m</sup>
4.	Joanna Thorndike (b. 1 Aug 1703, Beverly, Essex, MA, d. 27 Mar 1775, Beverly, MA) <sup>m</sup> = Ebenezer Lovett (b. 9 Feb 1702, Beverly, Essex, MA, d. 23 Jul 1778, Beverly, MA) <sup>n</sup>
5.	John Lovett (b. 2 Mar 1734, Beverly, Essex, MA, d. 13 Dec 1792, Beverly, MA) <sup>o</sup> = Judith Ober (b. 27 Nov 1738, Beverly, Essex, MA, d. 13 Sep 1829, Beverly, MA) <sup>p</sup>
6.	Jonathan Lovett (b. Abt 1751, Beverly, Essex, MA, d. 15 Feb 1823, Beverly, MA) <sup>q</sup> = Elizabeth Ober (b. 1 Aug 1755, Beverly, Essex, MA, d. 25 Jul 1804, Beverly, MA) <sup>r</sup>
7.	Nabby Baker Lovett (b. 17 Jul 1786, Beverly, Essex, MA, d. 16 Jun 1861, Beverly, MA) <sup>s</sup> = William Gallop (b. 18 Aug 1777, Beverly, Essex, MA, d. 15 Aug 1825, Beverly, MA) <sup>t</sup>
8.	Edmund Kimball Gallop (b. 3 Oct 1815, Beverly, Essex, MA, d. 29 Jan 1865, Beverly, MA) <sup>u</sup> = Abigail Hooper Danforth (b. 9 Sep 1819, Manchester, MA, d. 13 Mar 1904, Beverly, MA) <sup>v</sup>
9.	Lydia Danforth Gallop (b. 9 Jan 1861, Beverly, Essex, MA, d.14 May 1935, Beverly, MA) <sup>w</sup> = Joseph Thissell Haskell (b. 24 Dec 11857, Beverly, Essex, MA, d.14 May 1935, Beverly, MA) <sup>p</sup>
10.	<b>Joseph Wayne Haskell</b> (b. 26 Feb 1902, Wenham, Essex, MA, d. 15 Feb 1951, Nashua, NH) <sup>p</sup> = Dorothy Frances Tower (b. 23 Jul 1935, Boston, Suffolk, MA) <sup>x</sup>

<sup>1</sup> Family Bible of Abigail (Gallop) Bisson, owned by Elizabeth Haskell Fisk.

<sup>m</sup> *A Thorndike Family History – Descendants of John and Elizabeth (Stratton) Thorndike*, Newbury Street Press, Boston, MA 2000.

<sup>n</sup> City of Beverly, Births, Marriages, Deaths, 1653-1890, F-L, Vol. 43, page 109; Vital Records of Beverly, Essex, Co., MA, Vol. 1, Page 216, Vol. 2, Page 200, Vol. 2, Page 493; Headstone photo by Richard E. Haskell.

<sup>o</sup> City of Beverly, Births, Marriages, Deaths, 1653-1890, F-L, Vol. 43, pages 108, 109; Vital Records of Beverly, Essex, Co., MA, Vol. 1, Page 217, Vol. 2, Page 198, Vol. 2, Page 496; Headstone photo by Richard E. Haskell.

<sup>p</sup> City of Beverly, Births, Marriages, Deaths, 1653-1890, F-L, Vol. 43, pages 108; Vital Records of Beverly, Essex, Co., MA, Vol. 1, Page 241, Vol. 2, Page 198, Vol. 2, Page 497; Headstone photo by Richard E. Haskell.

<sup>q</sup> City of Beverly, Births, Marriages, Deaths, 1653-1890, F-L, Vol. 43, pages 108, 111; Vital Records of Beverly, Essex, Co., MA, Vol. 1, Page 213, Vol. 2, Page 200, Vol. 2, Page 496; Headstone photo by Richard E. Haskell.

<sup>r</sup> City of Beverly, Births, Marriages, Deaths, 1653-1890, F-L, Vol. 43, pages 111; Vital Records of Beverly, Essex, Co., MA, Vol. 1, Page 239, Vol. 2, Page 200, Vol. 2, Page 494; Headstone photo by Richard E. Haskell.

<sup>s</sup> City of Beverly, Births, Marriages, Deaths, 1653-1890, F-L, Vol. 43, pages 111; Vital Records of Beverly, Essex, Co., MA, Vol. 1, Page 209, Vol. 2, Page 130; Headstone photo by Richard E. Haskell; Family Bible of Abigail (Gallop) Bisson, owned by Elizabeth Haskell Fisk.

<sup>t</sup> Vital Records of Beverly, Essex, Co., MA, Vol. 1, Page 147, Vol. 2, Page 130, Vol. 2, Page 448; Headstone photo by Richard E. Haskell; Family Bible of Abigail (Gallop) Bisson, owned by Elizabeth Haskell Fisk.

<sup>u</sup> Vital Records of Beverly, Essex, Co., MA, Vol. 1, Page 146, Vol. 2, Page 130; Headstone photo by Richard E. Haskell.

<sup>v</sup> Vital Records of Beverly, Essex, Co., MA, Vol. 2, Page 82; Family bible of Lydia Danforth Gallop, owned by Richard E. Haskell; Headstone photo by Richard E. Haskell.

<sup>w</sup> Family bible of Lydia Danforth Gallop, owned by Richard E. Haskell; Headstone photo by Richard E. Haskell.

<sup>x</sup> Register of Marriages, Melrose, Middlesex Co., MA. Vol. 5, p. 374, No. 9250.

We therefore see that if you can follow your ancestors back to John Thorndike and Elizabeth Stratton, whose son Paul was one of the first five selectmen of the town of Beverly when it was incorporated in 1668, you then have at least three royal descents. The royal descents from John “Lackland,” King of England and William I the Lion, King of Scotland, are shown in Table 2. There is a third royal descent from Henry I, King of France through Elizabeth Stratton’s father, John Stratton.<sup>y</sup> From here, of course, there are many connections to other royalty of Europe. King John’s parents were Henry II and Eleanor of Aquitaine. Matilda (Maud), Queen of England and wife of Geoffrey “Plantagenet”, was the mother of Henry II and the daughter of Henry I. The parents of Henry I were William the Conqueror and Matilda of Flanders.

There are at least two ways to get from here to Charlemagne.<sup>z</sup> One is through Eleanor of Aquitaine through her father William X the Toulousian, Duke of Aquitaine. The other is through Matilda of Flanders. Therefore, although it is still true that the trick is to prove the “everyone is descended from Charlemagne,” it may be a little easier for you to prove that you are descended from Charlemagne.

**Table 2 Royal Descents of Elizabeth Stratton<sup>aa</sup>**

<p>1. <b>John "Lackland" , King of England</b> = (2) Isabel of Angouleme</p> <p>2. Richard Plantaganet = (mistress, possibly Joan de Vautort)</p> <p>3. (illegitimate )Sir Richard de Cornwall = Joan</p> <p>4. Joan De Cornwall = Sir John Howard</p> <p>5. Sir John Howard = Alice de Boys</p> <p>6. Sir Robert Howard = Margery Scales</p> <p>7. John Howard = Alice Tendring</p> <p>8. Henry Howard = Mary Hussey</p> <p>9. Elizabeth Howard = Henry Wentworth</p> <p>10 (12). Margery Wentworth = Sir William Waldegrave</p> <p>11 (13). Dorothy Waldegrave = Sir John Spring</p> <p>12 (14). Frances Spring = Edmund Wright</p> <p>13 (15). Mary Wright = William Derebaugh</p> <p>14 (16). Anne Derebaugh = John Stratton</p> <p>15 (17). <b>Elizabeth Stratton = John Thorndike</b></p>	<p>(1). <b>William I the Lion, King of Scotland</b> = Ermengarde de Beaumont</p> <p>(2). (illegitimate by a daughter of Richard Avenal) Isabel of Scotland = Robert de Ros</p> <p>(3). Sir William de Ros = Lucy St. John</p> <p>(4). Sir Robert de Ros = Isabel d'Aubigny</p> <p>(5). William de Ros = Maud Vaux</p> <p>(6). Agnes de Ros = Pain de Tibetot</p> <p>(7). John de Tibetot = Margaret Badlesmere</p> <p>(8). Robert de Tibetot = Margaaret Deincourt</p> <p>(9). Elizabeth de Tibetot = Sir Philip Despencer</p> <p>(10). Margery Despencer = Sir Roger Wentworth</p> <p>(11). Henry Wentworth = Elizabeth Howard</p>
---	---

<sup>y</sup> Gary Boyd Roberts, *The Royal Descents of 600 Immigrants to the American Colonies or the United States*, Genealogical Publishing Co., Inc., Baltimore, 2004, pages 528-529.

<sup>z</sup> See, e.g. <http://www3.sympatico.ca/robert.sewell/charlemagne.html#gen13>

<sup>aa</sup> Gary Boyd Roberts, *The Royal Descents of 600 Immigrants to the American Colonies or the United States*, Genealogical Publishing Co., Inc., Baltimore, 2004, pages 397, 426.